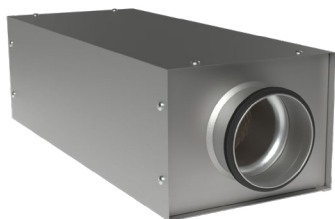


Circular straight low-built silencer

LRCNA



Description

Straight sound attenuator with circular connection and low installation height.

LRCNA dimensions makes it particularly suitable for residential ventilation, installation above suspended ceilings, or where space is otherwise limited.

The casing is made from galvanized steel and an inner tube made of steel sheet. The inner tube is designed with small openings to withstand mechanical cleaning without interfering with insertion loss. For safety and durability, mineral wool is used as the attenuation material. A non-woven cloth is inserted between the inner tube and the attenuation material, to prevent fibres from the insulation getting into the duct system.

Fulfils tightness class D.

Technical data for insertion loss, pressure drop, and self-generated noise is based on test conducted in accordance with ISO 7235.

For custom solutions, please contact Lindab sales.

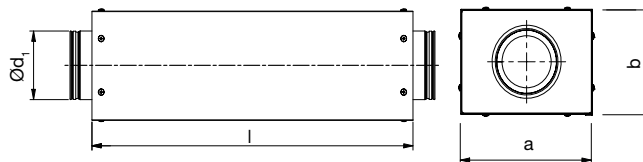
Order code

| | | | |
|--|----------------|----------|----------|
| Product | LRCNA | d | l |
| Connection (d) in mm (Ød₁) | 100 - 400 mm | | |
| Length (l) in mm (l_{nom}) | 500 or 1000 mm | | |

Example: LRCNA - 125 - 1000



Dimensions and sound data



| Ød ₁ [nom] | l [mm] | a x b [mm] | | Insertion loss [dB] for centre frequency [Hz] | | | | | | | | m [kg] |
|--------------------------|-----------|---------------|-----|---|-----|----|----|----|----|----|----|-----------|
| | | 63 | 125 | 250 | 500 | 1k | 2k | 4k | 8k | | | |
| 100 | 500 | 210 | 158 | 10 | 13 | 16 | 26 | 38 | 42 | 41 | 22 | 3,5 |
| 100 | 1000 | 210 | 158 | 15 | 25 | 24 | 39 | 50 | 48 | 47 | 36 | 6,1 |
| 125 | 500 | 239 | 181 | 9 | 13 | 14 | 24 | 31 | 34 | 31 | 17 | 4,0 |
| 125 | 1000 | 239 | 181 | 16 | 23 | 22 | 44 | 50 | 50 | 48 | 28 | 7,0 |
| 160 | 500 | 275 | 218 | 10 | 9 | 13 | 21 | 27 | 29 | 22 | 13 | 4,9 |
| 160 | 1000 | 275 | 218 | 15 | 15 | 21 | 43 | 50 | 50 | 41 | 21 | 8,6 |
| 200 | 500 | 328 | 254 | 9 | 7 | 10 | 16 | 22 | 22 | 15 | 12 | 6,1 |
| 200 | 1000 | 328 | 254 | 17 | 10 | 20 | 33 | 43 | 47 | 27 | 16 | 10,6 |
| 250 | 500 | 390 | 308 | 8 | 5 | 10 | 14 | 17 | 17 | 10 | 10 | 7,8 |
| 250 | 1000 | 390 | 308 | 16 | 9 | 17 | 29 | 39 | 37 | 18 | 14 | 13,3 |
| 315 | 500 | 453 | 372 | 6 | 5 | 8 | 11 | 14 | 12 | 8 | 8 | 9,9 |
| 315 | 1000 | 453 | 372 | 11 | 8 | 15 | 24 | 31 | 24 | 13 | 12 | 16,4 |
| 400 | 500 | 546 | 460 | 5 | 4 | 8 | 10 | 12 | 6 | 6 | 5 | 13,2 |
| 400 | 1000 | 546 | 460 | 8 | 7 | 15 | 20 | 15 | 16 | 9 | 11 | 21,8 |

Note! Max. attenuation specified is 50 dB.

Technical data

To select the appropriate silencer and optimize connection size and length for the best performance you can use our online tool [lindQST](#). Visit [LindQST](#)